

Universal Snow Plough

Item No: SB1360
SB1500



Owner Operation and Manual

TABLE OF CONTENTS

WARNINGS AND SAFETY PRECAUTIONS.....	3
PARTS LIST.....	4
SNOW PLOUGH VIEW	5
MOUNTING STEP 1 & STEP 2	6
MOUNTING STEP 3	7
MOUNTING STEP 4.....	8
HOW ADJUSTE BLADE HEIGHT.....	9
HOW ADJUSTE BLADE ANGLE	10
WARRANTY.....	11

Snow plough

Warning and safety precautions

WARNING: Injury or damage may result from failure to follow safety precautions.

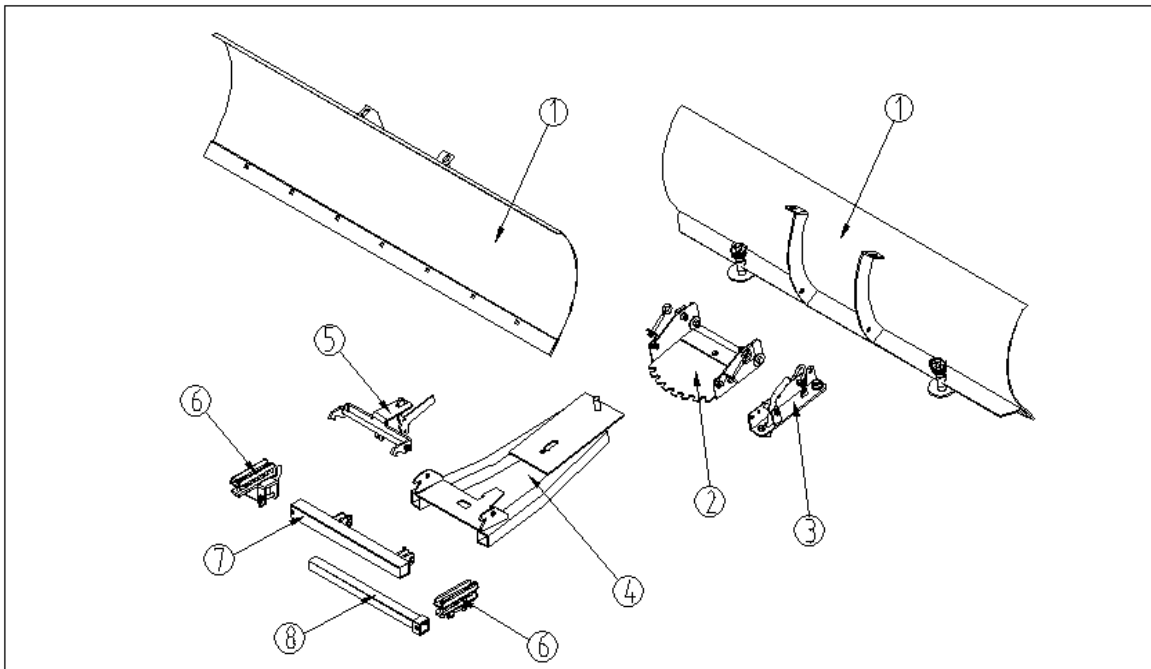
When working on snow plough, it is important to use common sense and avoid hazardous practices or situations. Some of these include:

- 1) Read this manual and your ATV/UTV operator manual before use.
- 2) When mounting snow plough to vehicle, Must stop vehicle engine.
- 3) When mounting snow plough to vehicle, Vehicle must be braked
- 4) When dismounting snow plough to vehicle, Must stop vehicle engine and brake the vehicle.
- 5) Persons who install, mount, operate or service this equipment must be properly instructed and warned of the hazards associated there with.
- 6) Do not place any part of your body under a raised blade.
- 7) Read operators manual completely before operating this equipment. Read all decal instructions , cautions and warnings .
- 8) If repairing must be performed on the plow, Must stop vehicle engine, and brake vehicle .
- 9) Always wear proper eye protection when working on the plow .
- 10) Avoid pinch points that can cause injury.
- 11) Adjust two mushroom sliders in right height, The mushroom sliders must be a little lower than blade.
- 12) Inspect daily all plow mechanical for proper attachment and wear. Check plough to insure that all parts are in place, bolts are tight and mushroom slider in proper level.
- 13) Always plow at a safe speed that's reasonable and prudent. Depending on terrain and snow conditions. Plowing abruptly into heavy and wet snow can cause loss of vehicle control .
- 14) The snow plough has a great deal of power, and accordingly can be hazardous when in operation.
- 15) The snow plough should not be operated with people standing or working with the area you are to be plowing .
- 16) Snow plough is not to be used for stacking snow. Damage and injury could result.
- 17) Use care when mounting or dismounting the snow plough.
- 18) Failure to follow above precautions and owner manual instructions may cause serious injury and void warranty.

PARTS LIST

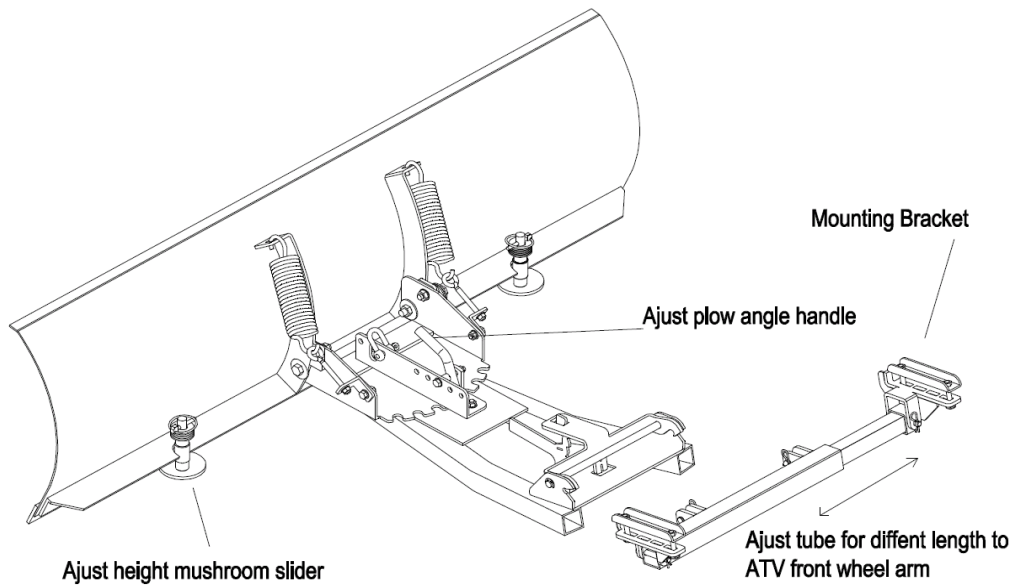
Item No.	Number Required	Description	Parts number
1	1	1500mm length snow blade	
2	1	Angle control plate	
3	1	Adjust plow angle handle	
4	1	Lift arm assembly	
5	1	Mounting bracket	
6	2	Mounting bracket assembly	
7	1	Adjust tube	
8	1	Adjust tube	

Contents:

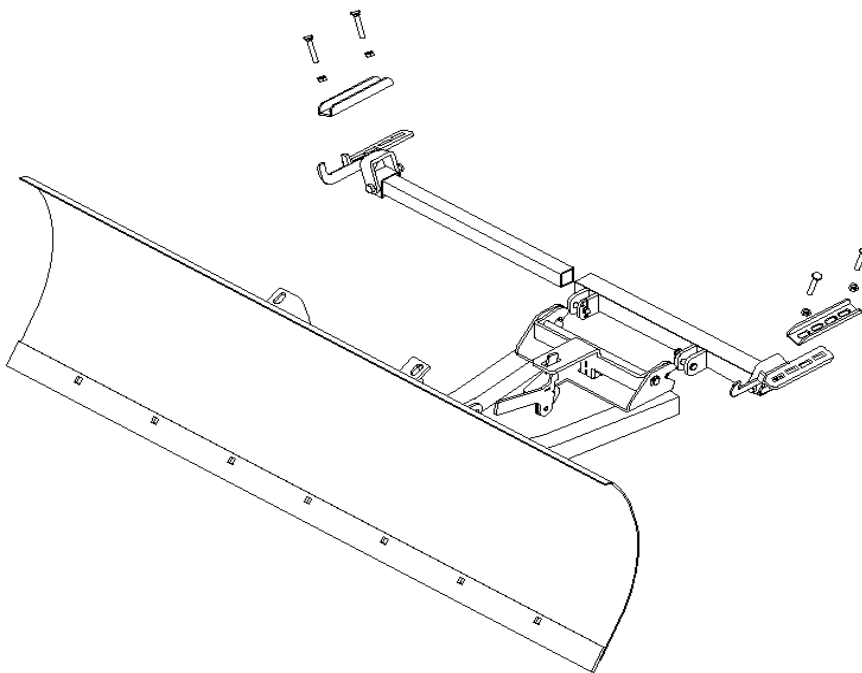


Snow bucket main parts and view as below

View from the back



View from the front



Tools required:

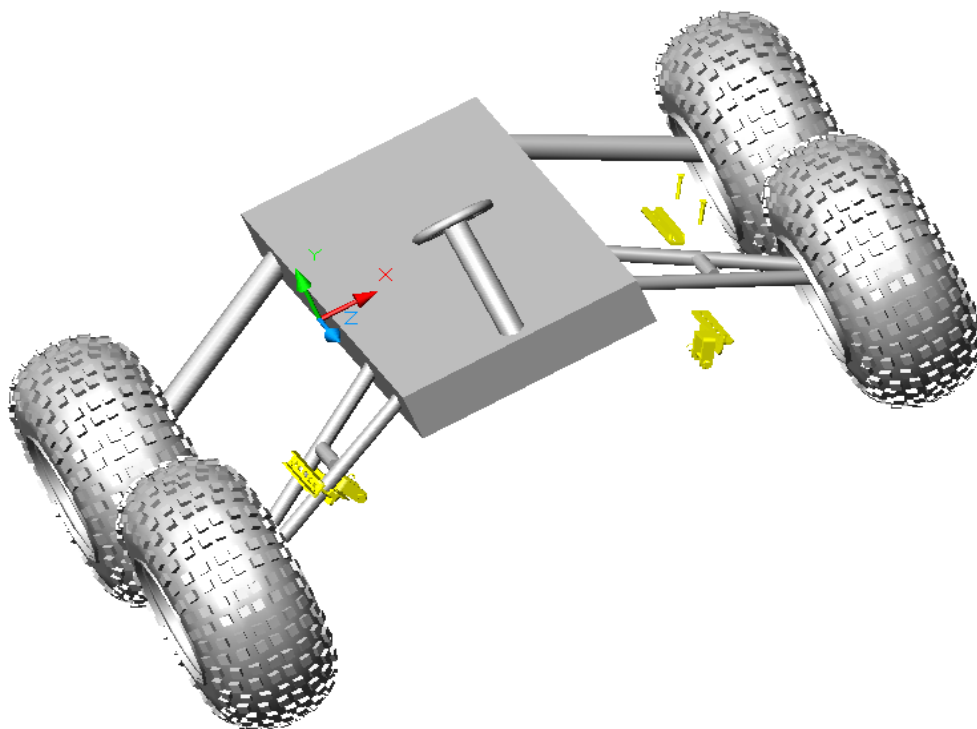
Basic hand wrench and socket set

Hand Glove

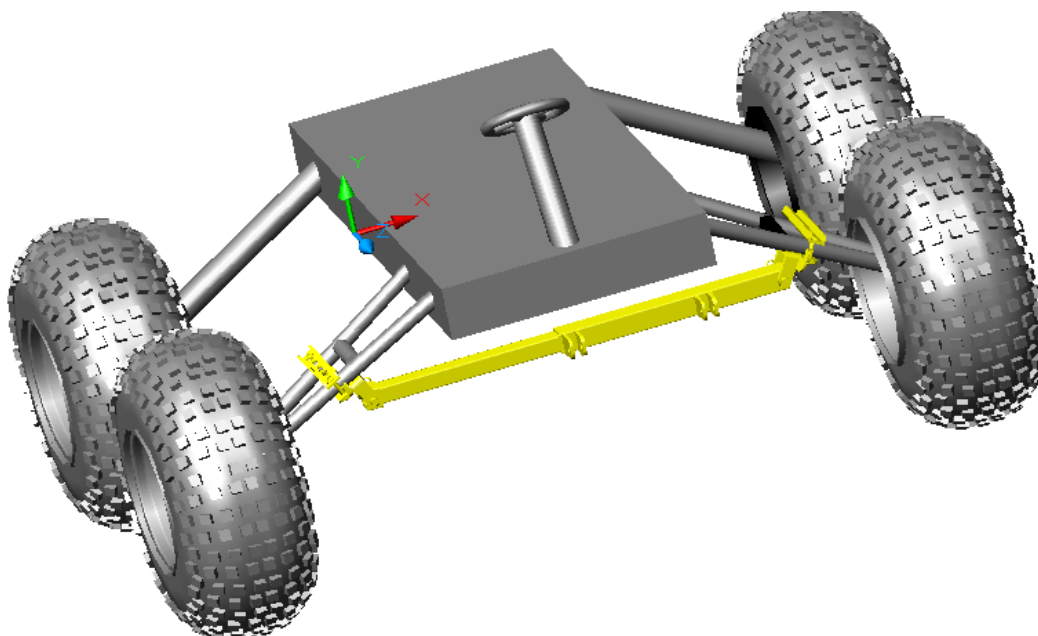
Depending on vehicle, additional tools may be required to remove plastic skid plate.

Mounting snow plough

1. Assembling Step 1,
Move vehicle near the snow plough.
Fixing the clamp to the ATV front wheel arm. As below,



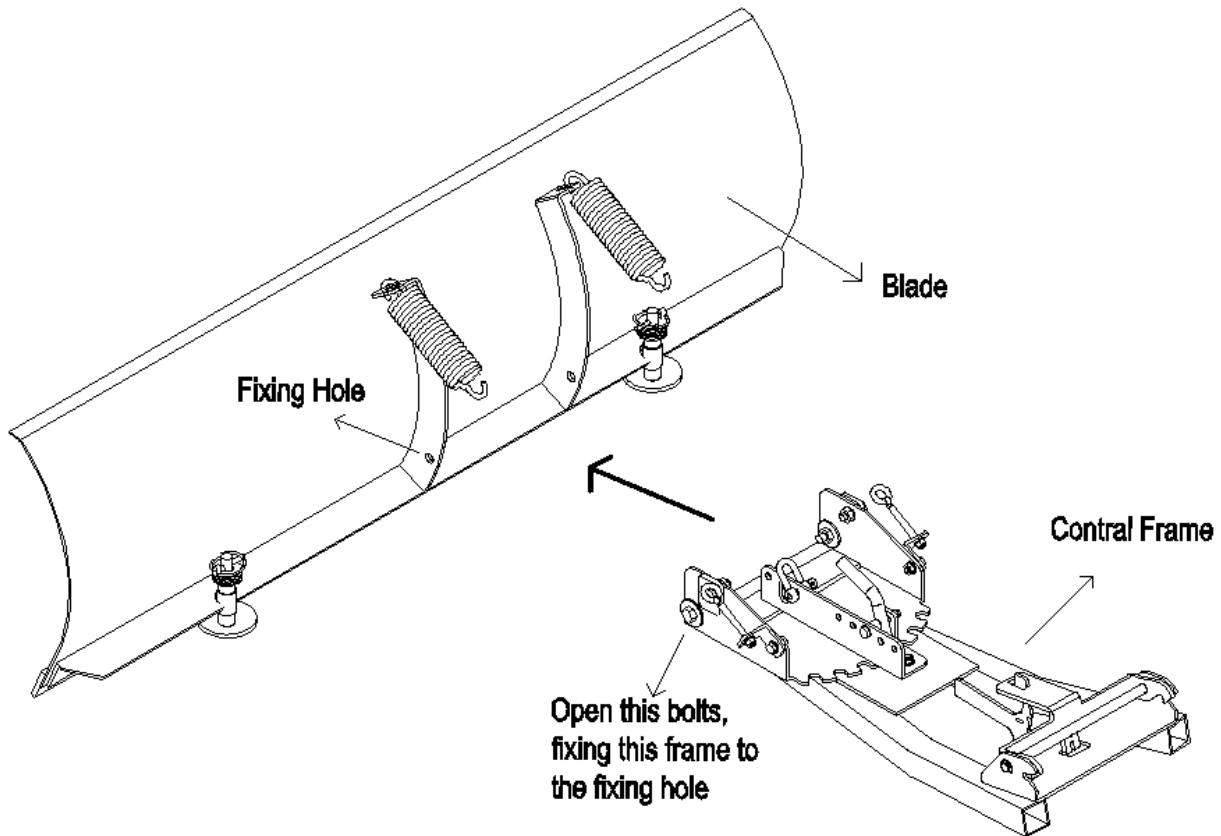
- Assembling step 2,
Using the square pin to fix the telescope tube to the clamp, as below.



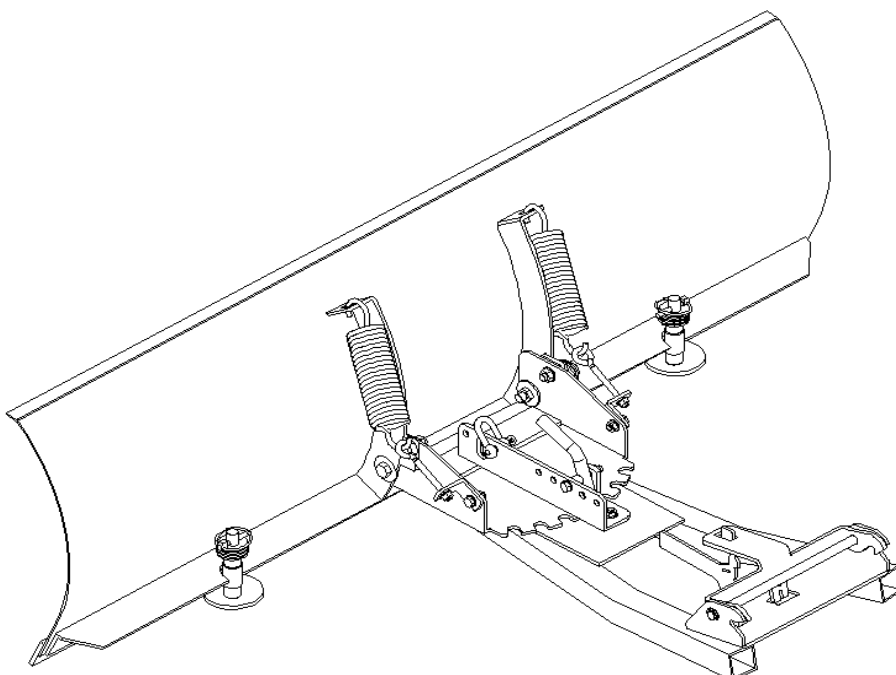
Assembling step 3

Fixing the middle control frame to the snow blade, Assembling the two big springs, Open the bolts and fixing the control frame to the blade fixing hole, Please see picture as below,

Before assembling picture

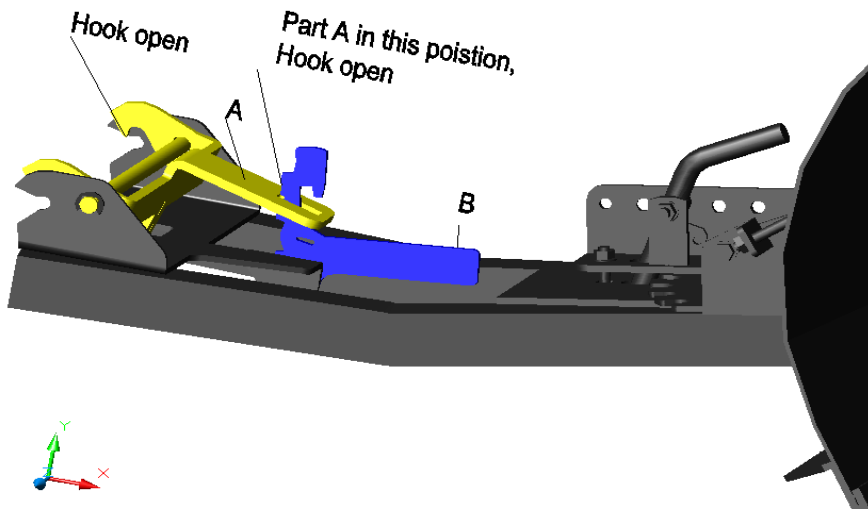


After assembling picture

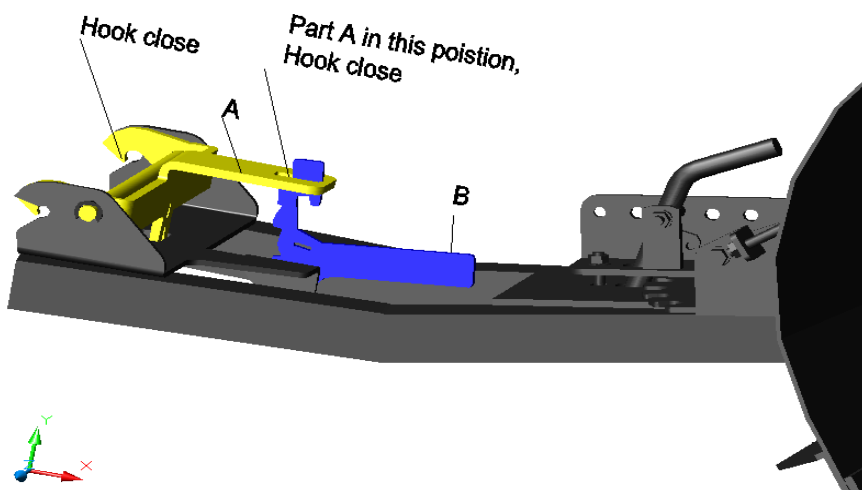


Assembling step 4,

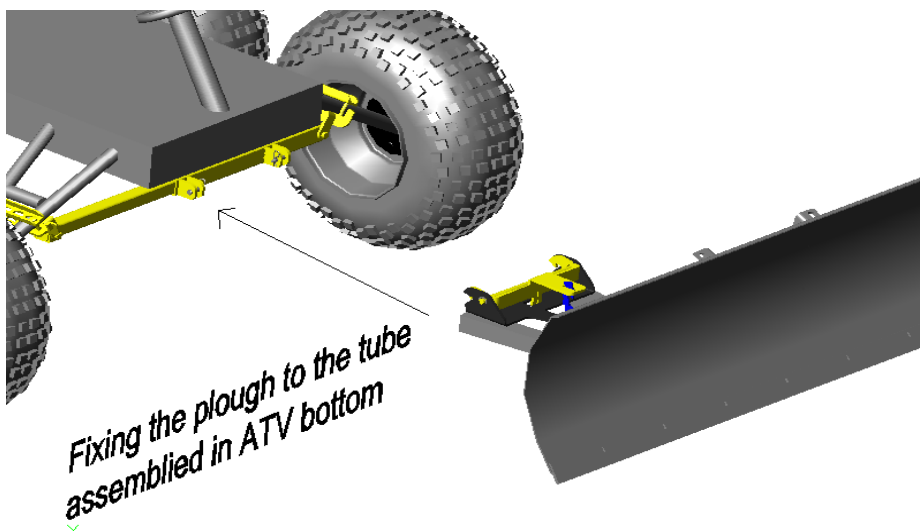
Fixing the middle control frame and plough to the telescope tube as below. First push the part "A" down, and push the part "B" down, The "hook" will be open. Second move this frame to bottom of ATV , and fix the "hook" to the telescope tube pin, Then release the hand "B" , this frame will be fixed to the ATV . See picture below,



Hook open picture



Hook close picture



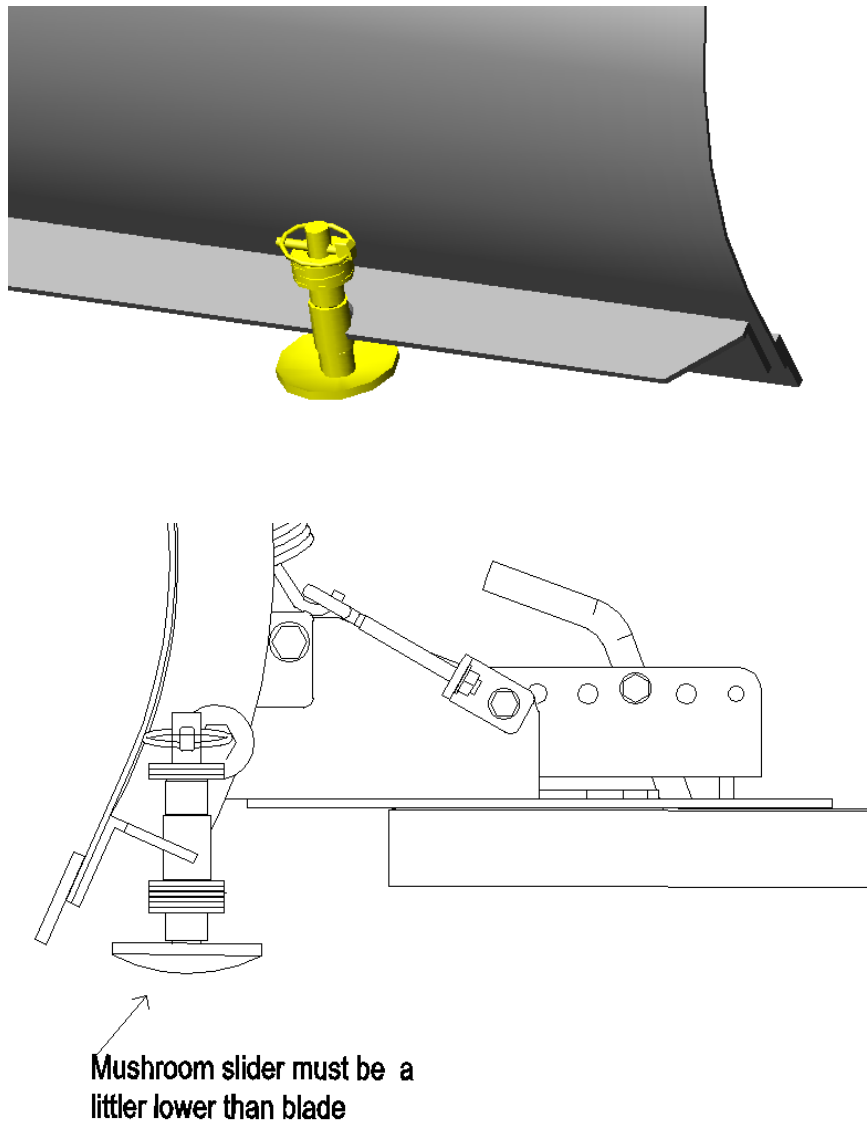
Move the plough to the bottom

Our snowplow is designed and built with one goal in mind – to make your job easier. and designed to save time and effort , while at the same time ensuring it will stand up to nature's worst . But we don't just make better snow ploughs, we have lots of ideas on how to plow snow better . So browse through this section , and see how we can help you be the best you can be .

How to adjust the blade height

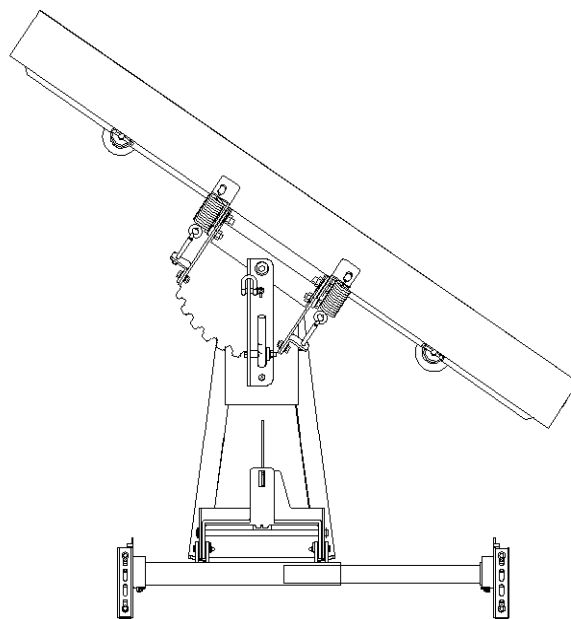
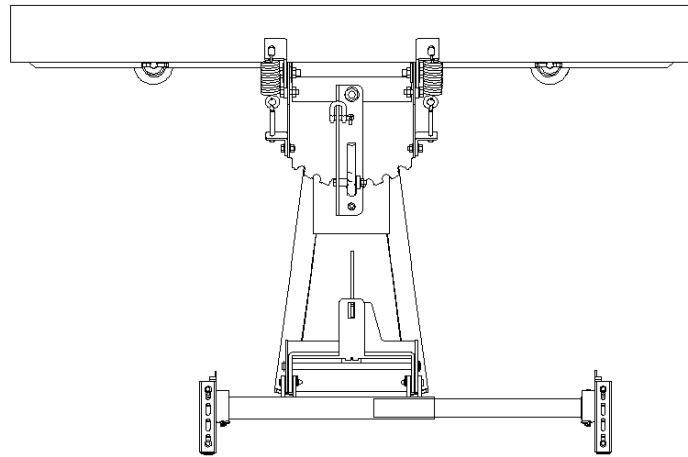
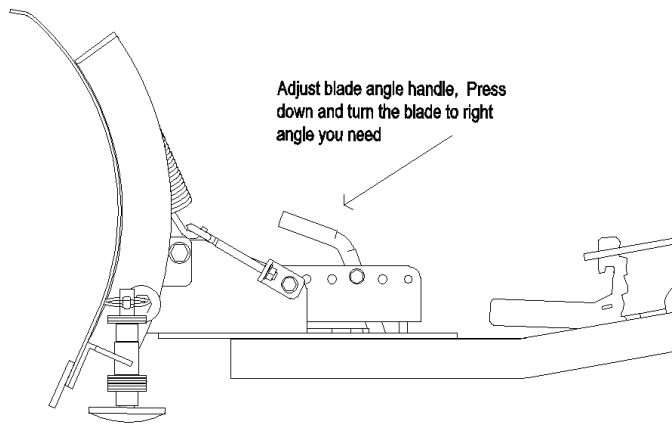
Before using plough, please adjust the blade in right height, The height is adjust by the mushroom slider, you can use the washers and tube to adjust the mushroom slider, The mushroom slider must be a little lower then blade, The mushroom slider function is for sliding on road surface. Important !

See picture below,



How to adjust the blade angle!

Push the yellow round pin, and move the blade to right angle, Release the hand, it will be fixed. See below pictures.



How to dismount snow plough

1. Stop vehicle engine, and brake the vehicle.
2. Push the hand in the control frame and release the frame from the bottom of vehicle.
3. Remove the adjust tube from the bottom of the vehicle.
4. Take care not lost all pins and bolts when dismounting.
5. Take the snow plough indoor, not leave it outside.

One Year Limited Warranty

Warranty parts service

Products sold shall be warranted from defects in workmanship and material when used within the service and scope for which they were designed for a period of one year from date of purchase. Contact your distributor/dealer for replacements parts or warrant work . Please have your original sales receipt or other proof of purchase date when requesting any warranty work.

This warranty does not apply to parts that have been damaged by accident, alteration, abuse, improper maintenance, normal wear, or other causes beyond the manufacturer's control. In order to protect you and your vehicle, certain parts of the plough system or hardware are designed to fail when the equipment is over-stressed. parts that are lost due to loosening and improper maintenance are not covered under warrant.

To ensure the correct parts are acquired always provide the model number of your snow plough and the part number and description obtained from the illustrated parts breakdown in this manual.